

LAUGFS PRESS ON



Unconquerable Performance

High performance
natural rubber
compound

Reduces chunking and cutting

Huge lug depth

Increases life and traction



Perfect Bonding

Premium bonding
technology is used to
keep the layers intact
while working with
heavy loads

LAUGFS POB TYRES offer an advanced process that permanently cross-link the rubber compound to the rim resulting in long lasting performance. Excellent wear strength and well balanced energy efficiency ensure protection for your investment whilst avoiding chunking in the most commanding applications.

Usage Intensity



Energy Saving



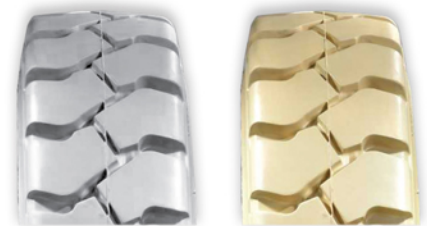
Tyre Life



Comfort



AVAILABLE
IN NON-MARKING
COMPOUND



LAUGFS

INDUSTRIAL TYRES



LAUGFS PRESS ON

Unconquerable Performance



TRACTION



SMOOTH



SEMI TRACK

Press On

Tyre Designation Tyre Size		Tread Design	Tyre Dimension		Load Capacity(Kg)						Static Okm/h	Finish wt(kg)	Pcs/20ft
inch	mm	Smooth(s) / SM-FL / Traction (TR) / Semi Track(SM-TR)	OD(mm)	SW(mm)	Up to 10Km/h		Up to 16Km/h		Up to 25Km/h				
9x5x5	229x127-127	S	229	127	960	780	855	720	690	570	1450	6	3000
10x4-61/2	254x100-165.1	S	254	100	780	640	695	585	565	465	1175	6.2	3000
10x5-61/2	254x127-165.1	S	254	127	1015	835	900	750	730	605	1530	7	2300
10 x 6 - 6 1/2	254 x 152 - 165.1	S	254	152								7.7	2890
10 x 7 - 6 1/2	254 x 178 - 165.1	S	254	178								8.9	2480
13.5x5-8	343x140-203.2	TR	343	140	1510	1240	1350	1135	1095	900	2280	12.6	1450
13.5x5-8	343x140-203.2	S	343	140	1510	1240	1350	1135	1095	900	2280	12.9	1450
14 x 4 1/2 - 8	356 x 114 - 203.2	TR	350	114	1165	955	1040	875	845	695	1760	10.7	1800
14 x 4 1/2 - 8	356 x 114 - 203.2	S	350	114	1165	955	1040	875	845	695	1760	10.7	1800
14 x 5 1/2 - 8	356 x 140 - 203.2	S	350	140								14.3	1650
14 x 6 1/2 - 8	356 x 165 - 203.2	S	350	165								18.9	1450
14 x 5 - 10	356 x 127 - 254	S	352	127	1335	1100	1195	1000	970	795	2020	11.2	1700
15 x 5 - 11 1/4	381 x 127 - 285.8	S	375.85	127	1390	1140	1240	1040	1010	830	2100	11.75	1450
15 x 6 - 11 1/4	381 x 152 - 285.8	S	375.85	152	1700	1410	1535	1290	1250	1020	2595	14.6	1200
16 x 5 - 10 1/2	406 x 127 - 266.7	TR	401.1	127	1505	1240	1345	1130	1095	895	2275	14.2	1260
16 x 5 - 10 1/2	406 x 127 - 266.7	S	401.1	127	1505	1240	1345	1130	1095	895	2275	14.25	1260
16 x 6 - 10 1/2	406 x 152 - 266.7	TR	402.2	152	1905	1565	1700	1430	1385	1135	2875	17.2	1050
16 x 6 - 10 1/2	406 x 152 - 266.7	SM-TR	402.2	152	1905	1565	1700	1430	1385	1135	2875	17.4	1050
16 x 6 - 10 1/2	406 x 152 - 266.7	S	402.2	152	1905	1565	1700	1430	1385	1135	2875	17.3	1050
16 x 7 - 10 1/2	406 x 178 - 266.7	SM-TR	402.2	178	2320	1905	2070	1740	1685	1350	3500	20	900
16 x 7 - 10 1/2	406 x 178 - 266.7	S	402.2	178	2320	1905	2070	1740	1685	1350	3500	20.2	900
16 1/4 x 5 - 11 1/4	413 x 127 - 285.8	TR	411.2	127	1525	1250	1360	1145	1105	905	2300	14.4	1260
16 1/4 x 5 - 11 1/4	413 x 127 - 285.8	S	411.2	127	1525	1250	1360	1145	1105	905	2300	14.4	1260
16 1/4 x 6 - 11 1/4	413 x 152 - 285.8	SM-TR	411.2	152	1915	1570	1710	1435	1390	1140	2890	17.25	1050
16 1/4 x 6 - 11 1/4	413 x 152 - 285.8	S	411.2	152	1915	1570	1710	1435	1390	1140	2890	17.3	1050
161/4x7-111/4	413 x 178 - 285.8	S	412	178	2320	1905	2070	1740	1685	1350	3500	20.8	880
	425 x 260 - 305	S	426.05	260	3625	2975	3235	2720	2630	2115	5470	30.5	560
	450 x 300 - 305	S	452.6	300	4650	3820	4150	3490	3375	2770	7020	40	440
	620x420-480	S	621.5	420								93.4	132
	645 x 250 - 410	S	637.85	250	4805	3930	4180	3430	3370	2745	7260	64.6	240
	645 x 300 - 410	S	637.85	300	6060	4960	5275	4330	4170	3460	9155	79.8	190
	645 x 350 - 410	S	643.3	350	7315	5985	6365	5225	5130	4180	11045	94	162
	645 x 400 - 410	S	643.3	400	8500	6985	7265	6125	6100	4800	12800	106.1	134
18 x 5 - 12 1/8	457 x 127 - 308	S	451.75	127	1640	1350	1465	1230	1195	980	2480	16.9	1050
18 x 6 - 12 1/8	457 x 152 - 308	TR	453.6	152	2090	1715	1865	1565	1515	1245	3155	20.25	880
18 x 6 - 12 1/8	457 x 152 - 308	S	453.6	152	2090	1715	1865	1565	1515	1245	3155	20.35	880
18 x 7 - 12 1/8	457 x 178 - 308	TR	450.8	178	2550	2100	2280	1910	1855	1520	3855	23.6	740
18 x 7 - 12 1/8	457 x 178 - 308	S	450.8	178	2550	2100	2280	1910	1855	1520	3855	24.1	740
18x8-121/8	457x203-308	TR	450.9	203	3000	2460	2680	2230	2180	1785	4530	26.7	640
18x8-121/8	457x203-308	S	450.9	203	3000	2460	2680	2230	2180	1785	4530	27.6	640
18x9-121/8	457x229-308	SM-TR	450.9	229	3465	2840	3090	2600	2510	2060	5230	30.5	600
18x9-121/8	457x229-308	S	450.9	229	3465	2840	3090	2600	2510	2060	5230	31	600
21 x 7 - 15	533 x 178 - 381	TR	528	178	2870	2350	2560	2150	2085	1710	4335	29.6	560
21 x 7 - 15	533 x 178 - 381	S	528	178	2875	2350	2560	2150	2085	1710	4335	30	560
21 x 8 - 15	533 x 203 - 381	TR	532.9	203	3375	2775	3025	2530	2450	2010	5100	33.7	480
21 x 8 - 15	533 x 203 - 381	S	532.9	203	3375	2775	3025	2530	2450	2010	5100	34.3	480
21x9-15	533x229-381	S	533	229	3900	3205	3485	2925	2830	2320	5890	38.8	440
21x9-15	533x229-381	SM-TR	533	229	3900	3205	3485	2925	2830	2320	5890	42.6	440
22 x 8 - 16	559 x 203 - 406.4	S	560.3	203	3500	2875	3125	2625	2540	2085	5285	35.4	440
22 x 9 - 16	559 x 229 - 406.4	TR	553.8	229	4045	3325	3600	3025	2930	2140	6110	41.55	400
22 x 9 - 16	559 x 229 - 406.4	S	553.8	229	4045	3325	3600	3025	2930	2140	6110	42.2	400
22 x 10 - 16	559 x 254 - 406.4	S	554.2	254	4570	3750	4080	3425	3315	2740	6900	47.7	360
22 x 12 - 16	559 x 305 - 406.4	S	561.1	305	5625	4625	5030	4225	4090	3350	8515	56.8	270
22 x 12 - 16	559 x 305 - 406.4	SM-FL	559	305	5625	4625	5030	4225	4090	3350	8515	56.9	270
22 x 12 - 16	559 x 305 - 406.4	TR	559	305	5625	4625	5030	4225	4090	3350	8515	56.2	270
22 x 14 - 16	559 x 356 - 406.4	S	560.8	356	6710	5510	5990	5030	4875	3990	10130	67	230
22 x 16 - 16	559 x 406 - 406.4	S	560.6	406	7760	6375	6925	5820	5635	4620	11715	74.5	200
28 x 10 - 22	711 x 254 - 558.8	S	705	254	5470	4460	4885	4105	3970	3255	8260	65.9	216
28 x 12 - 22	711 x 305 - 558.8	S	705	305	6750	5574	6025	5060	4900	4015	10190	78.5	168
28 x 14 - 22	711 x 356 - 558.8	S	713	356	8000	6595	7000	6020	5830	4780	12125	94.5	140
28 x 16 - 22	711 x 406 - 558.8	S	713.5	406	9200	7625	8290	6960	6740	5525	14000	107.4	120
	920x250-670	S	920	250								122	100
	920x400-670	S	920	400	7919	6499	6379	5199			13739	197	60
40 x 10 - 30	1016 x 254 - 762	S	1018	254								138	90
40 x 12 - 30	1016 x 305 - 762	S	1018.4	305	8760	7000	7500	6200	6100	5005	13000	169	70
40 x 14 - 30	1016 x 356 - 762	S	1018.4	356									
40 x 16 - 30	1016 x 406 - 762	S	1018.4	406	12000	10000	10800	8500	8700	7095	18500	227	50



LAUGFS EUROPE BV
Florijnweg 5 Velp, 6883JN, Netherlands.

arnold@laugfs.eu



LAUGFS USA LLC
2875 S. 25th Avenue,
Broadview, IL 60155, USA.

mark@laugfsusa.com



LAUGFS Corporation (Rubber) Limited,
No. 101, Maya Avenue, Colombo 6, Sri Lanka.
Tel: +94115566222 / Email: info.rubber@laugfs.lk
Web: www.laugfsindustryaltires.lk / www.laugfs.lk

